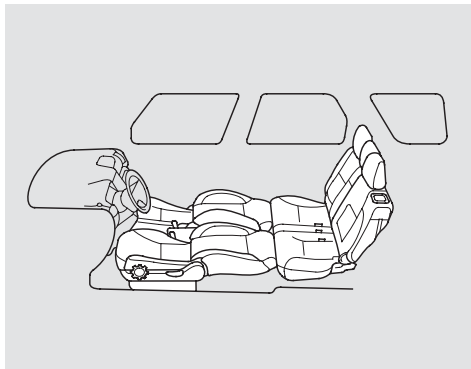
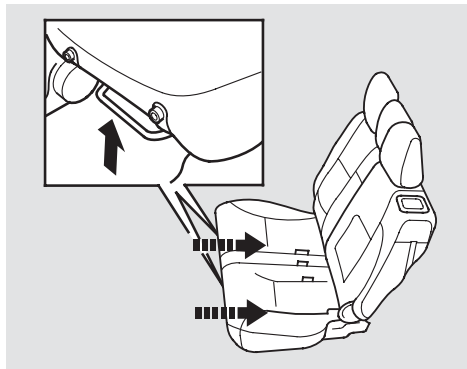


# Seats

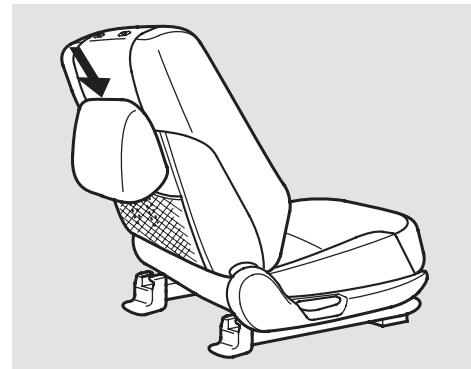
## Reclining the Front Seats



You can recline the seat-backs on the front seats to a fully flat position so they are level with the rear seat cushions, making a large cushioned area. To do this:



1. Adjust the rear seats as far back as they will go.



2. Remove the head restraints from the front seats (see page 99 ).

Store the head restraints in the front seat-back pockets.